

CANTERBURY CLIMATE PARTNERSHIP PLAN (CCPP)

Kaikōura Council Briefing
8 May 2024

Dr Fiona Shanhun (Chief Scientist)
Isla Hepburn (Senior Strategy Advisor)
Environment Canterbury



REGIONAL COLLABORATION ON CLIMATE ACTION PLANNING

CANTERBURY
Mayoral Forum

A strong regional economy with resilient, connected communities and a better quality of life, for all.



Waimakariri
District Council



Christchurch
City Council



Mackenzie
District Council



Waimate
District Council



Ashburton
District Council



Timaru
District Council



Waitaki
District Council



Hurunui
District Council



Selwyn
District Council



Kaikōura
District Council



Environment
Canterbury Regional
Council

CLIMATE CHANGE RISKS IN KAIKŌURA DISTRICT

- More extreme weather events
- More hot days and fewer frosts
- Warming ocean temperatures
- Ocean acidification

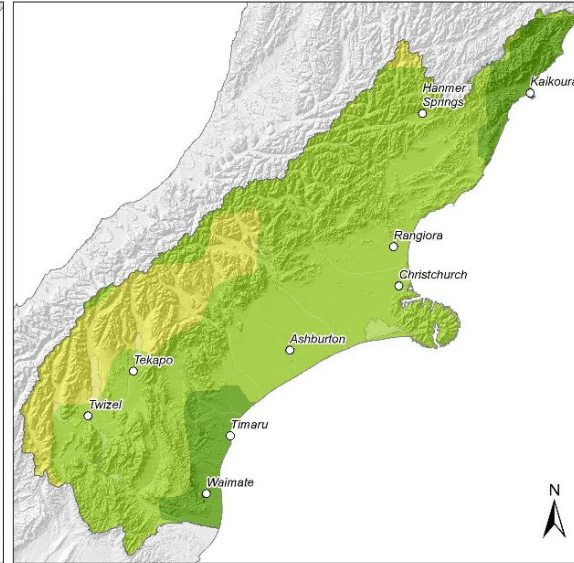
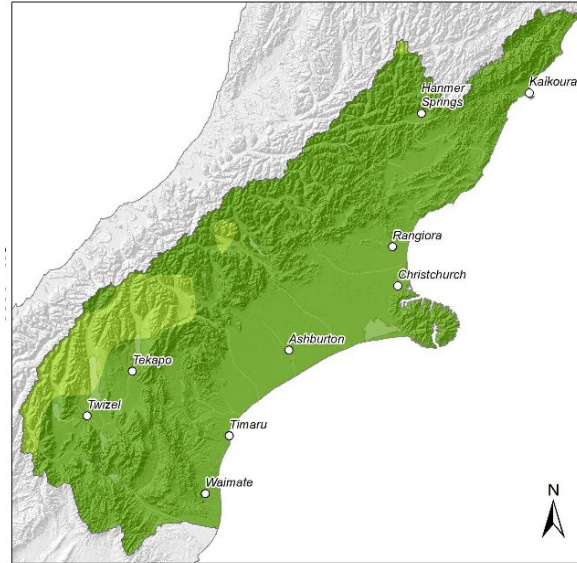


Warming projections for Canterbury

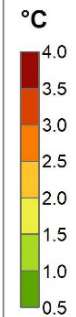
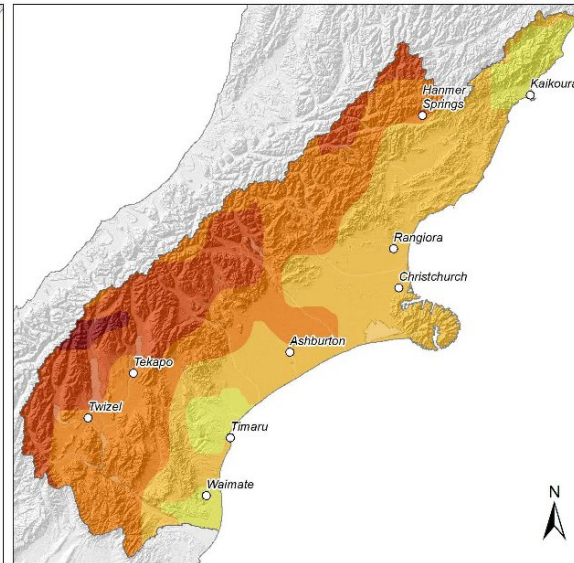
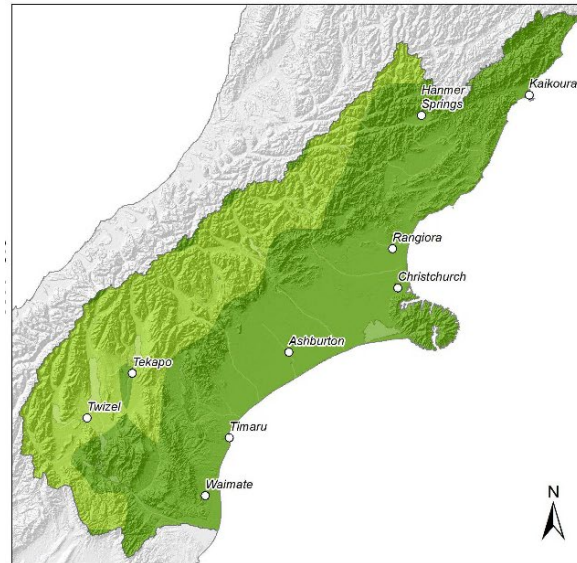
2040

2090

Mid-range emissions scenario

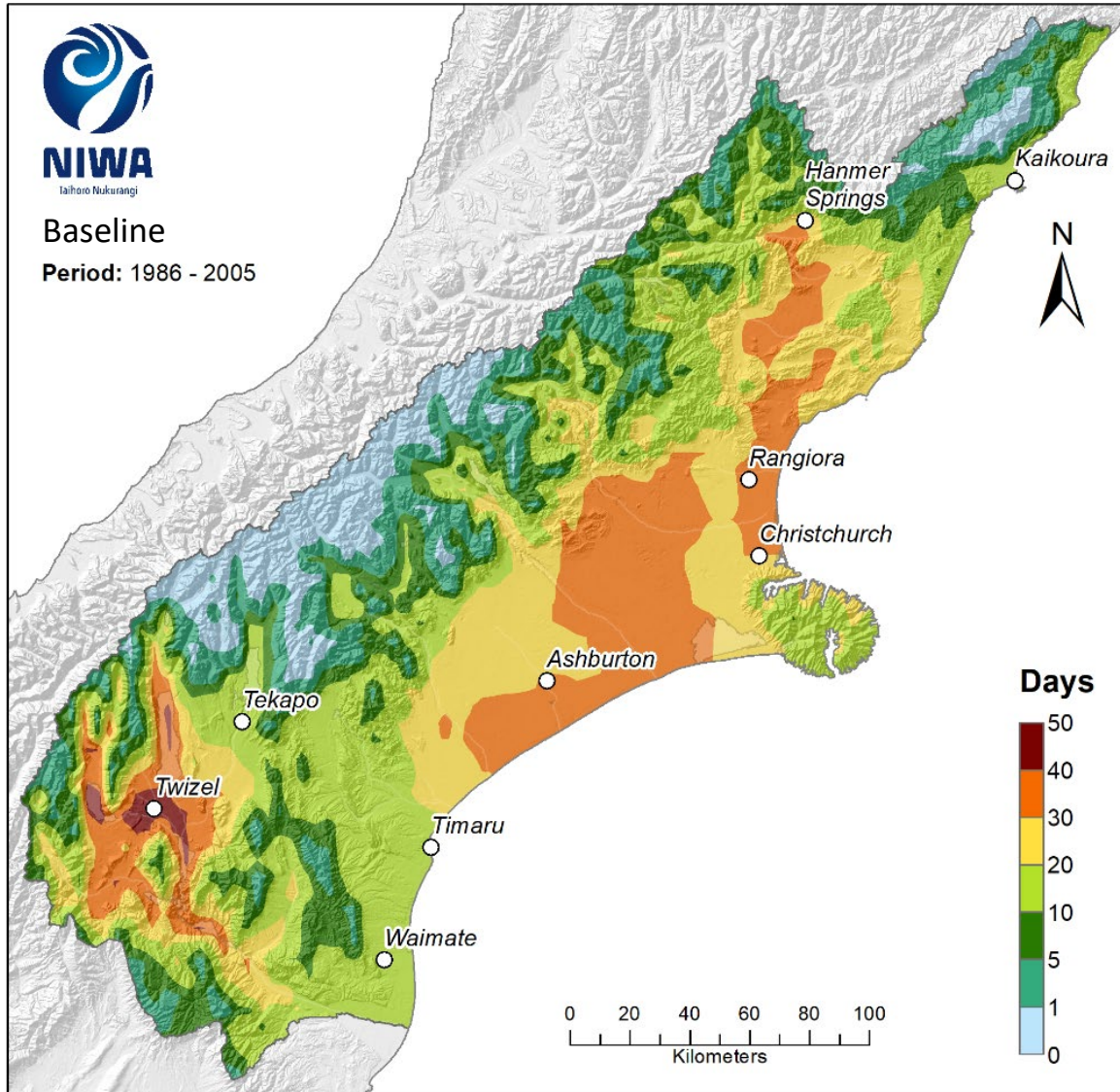


Business as usual emissions scenario

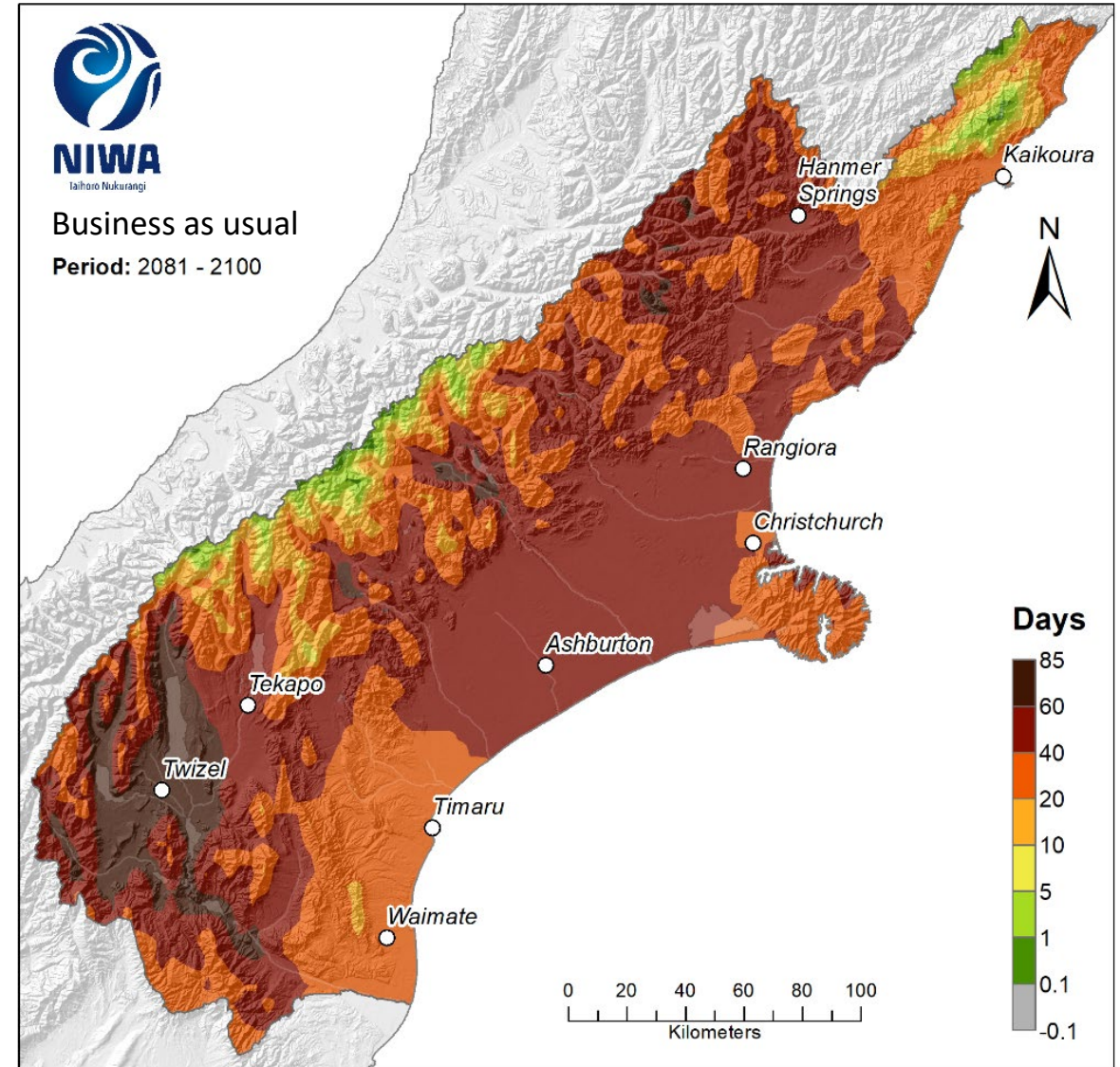


More hot days

Baseline number of annual hot days ($\geq 25^{\circ}\text{C}$)

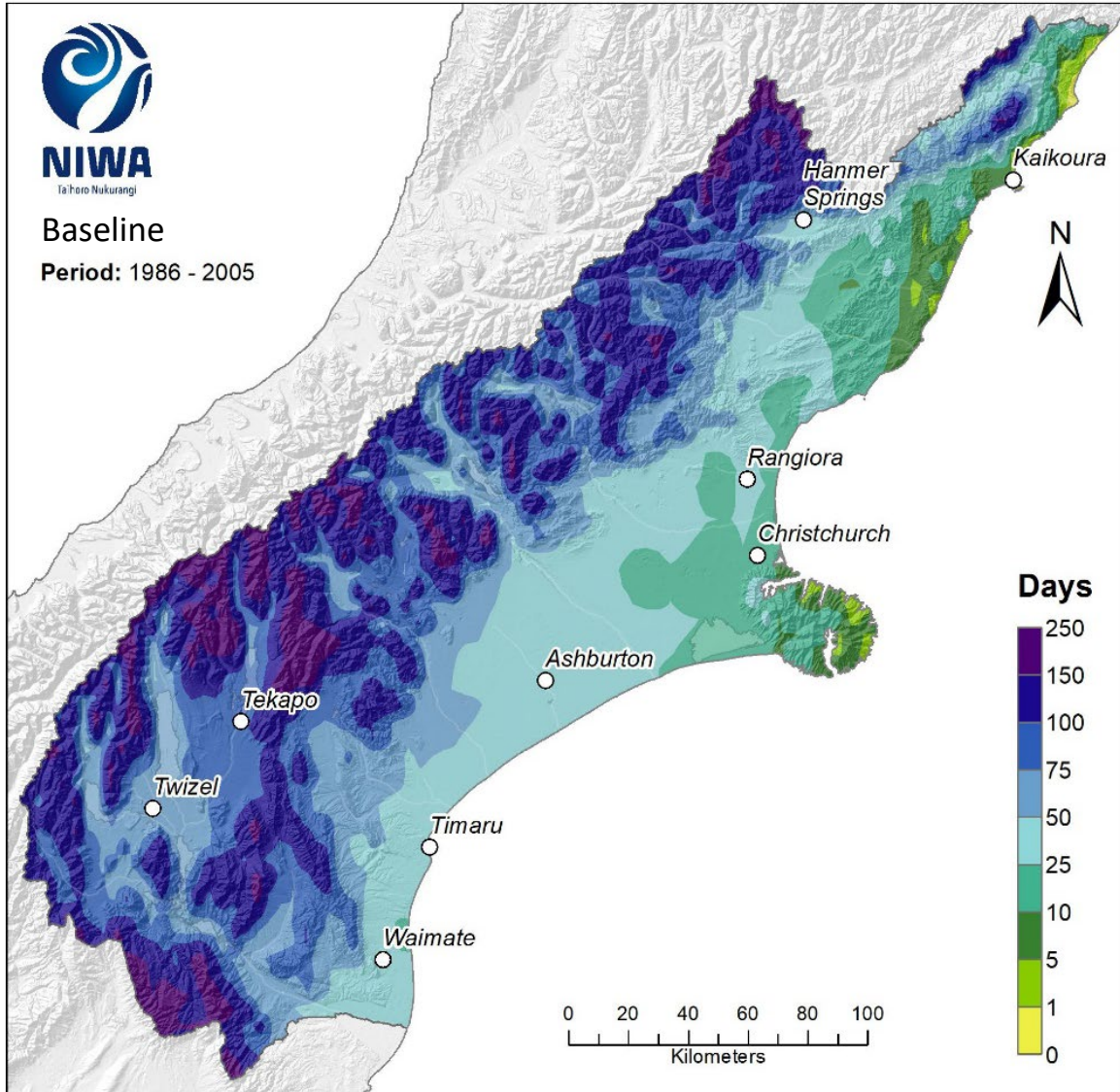


Change in number of annual hot days ($\geq 25^{\circ}\text{C}$)

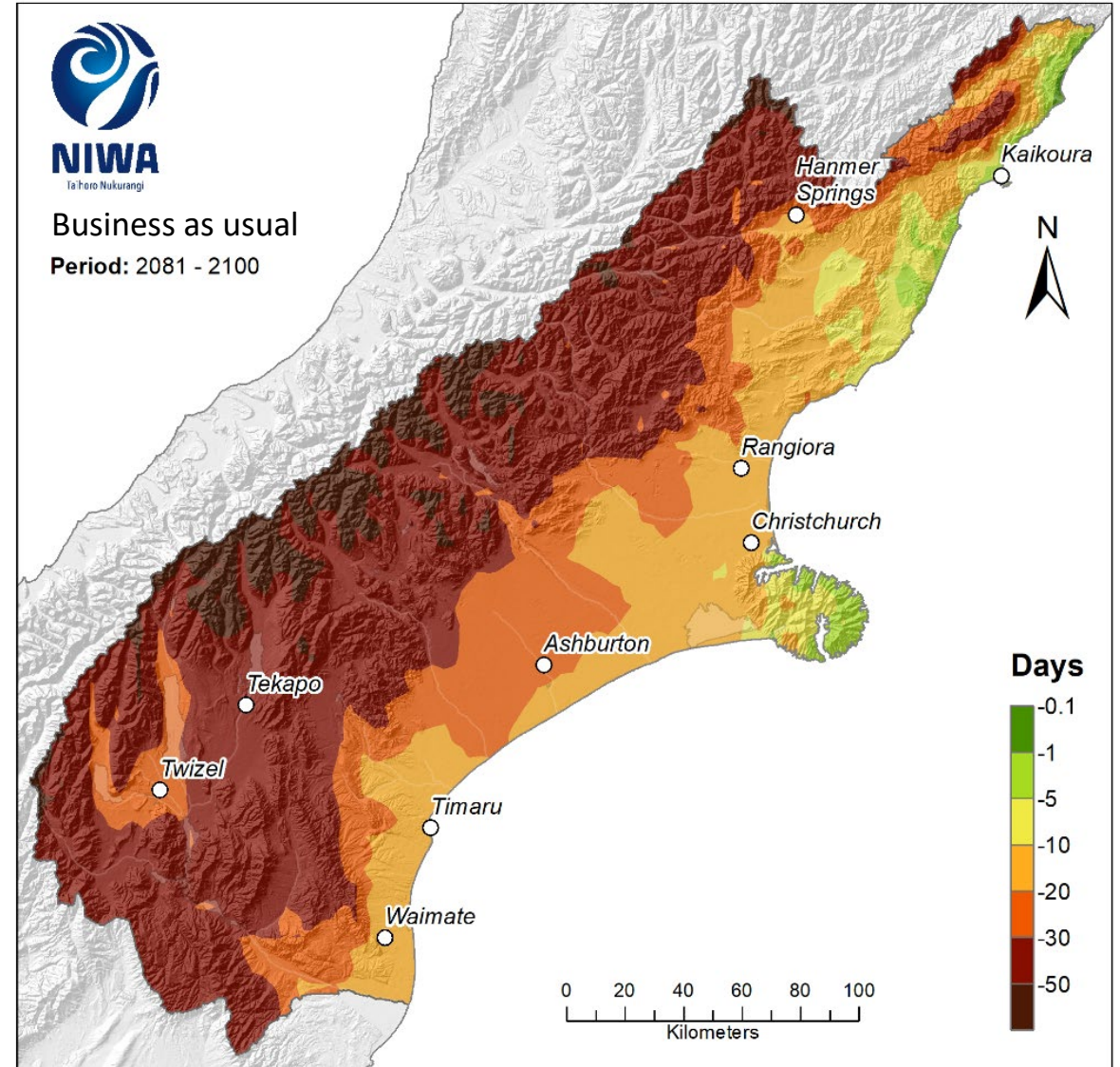


Fewer frosts

Baseline number of annual frost days ($\leq 0^{\circ}\text{C}$)



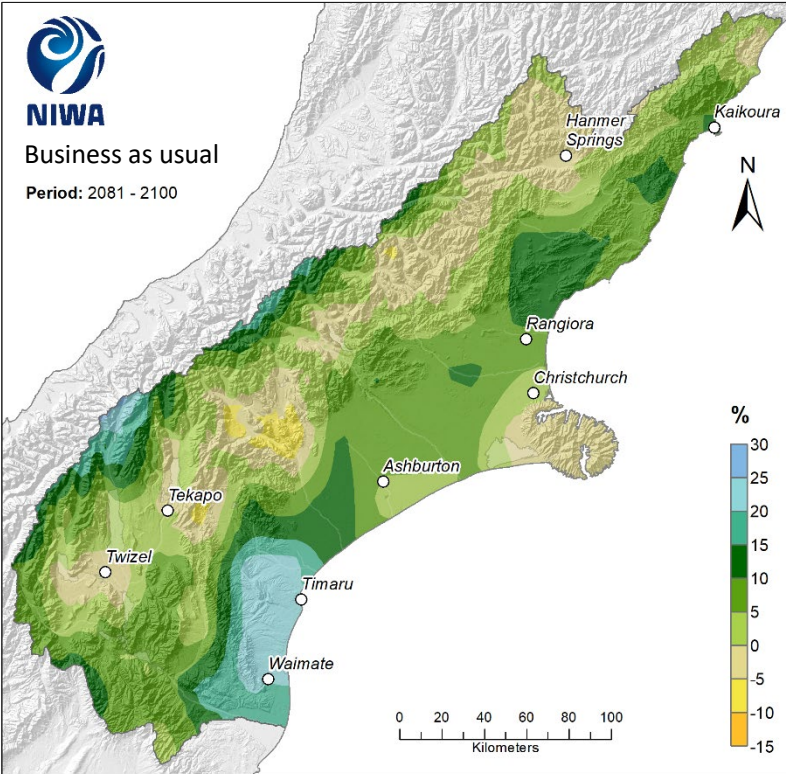
Change in number of annual frost days ($\leq 0^{\circ}\text{C}$)



Changes to rainfall patterns

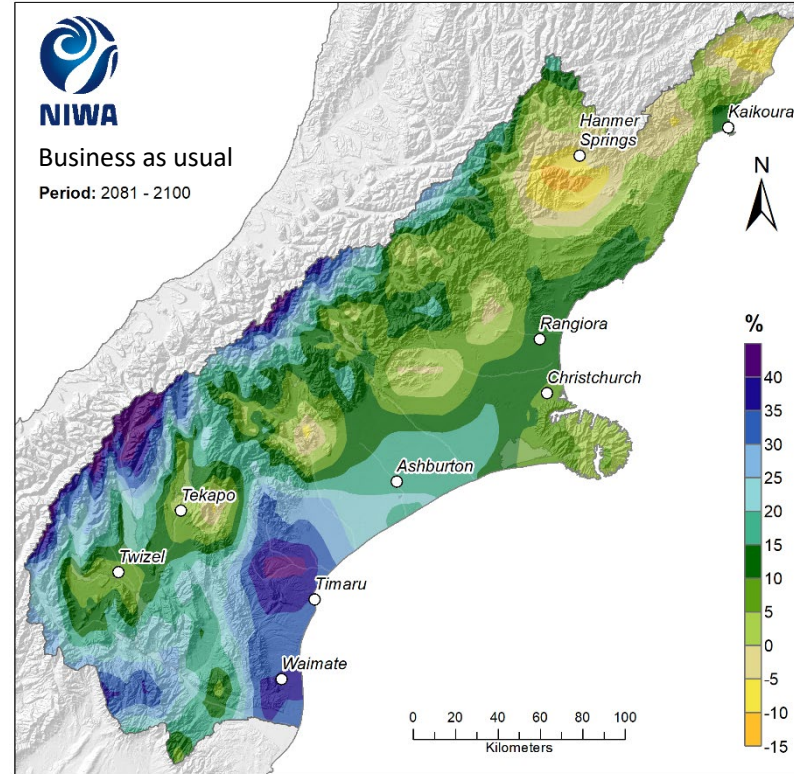
Wetter on the plains

Change in annual mean rainfall



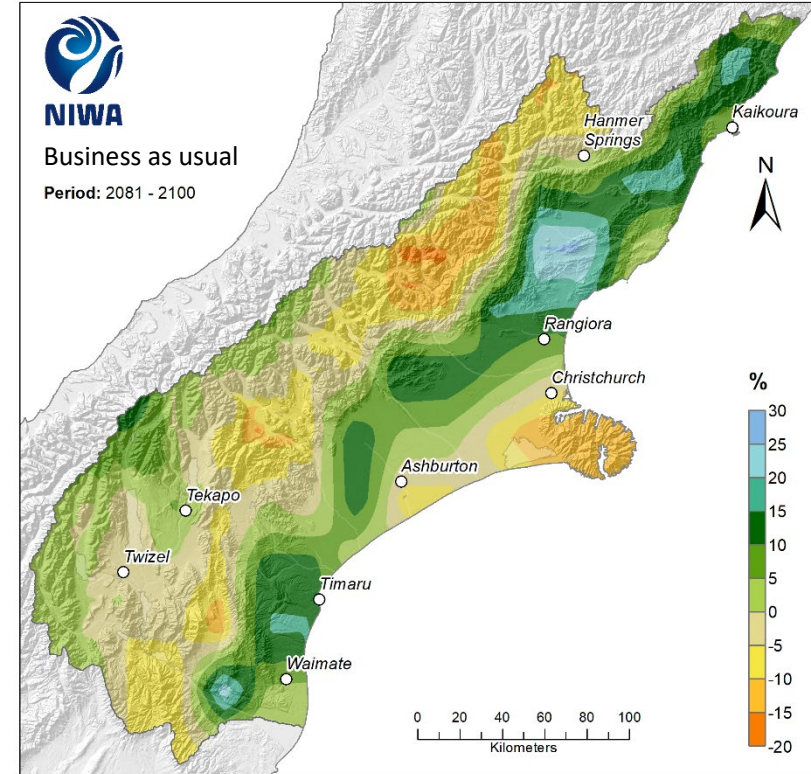
Wetter winters


Change in winter mean rainfall



Drier for some in summer

Change in summer mean rainfall





Intense rain/storm impacts

- Increasing rainfall intensity
- More slips and larger floods
- Increased runoff, erosion and sedimentation
- Impacts on infrastructure, water supply, coastal erosion





Impacts on marine environments

- More frequent and severe marine heatwaves
- Increased pests and diseases
- Effects on taonga species



Mayoral Forum's
**Plan for
Canterbury**
2023-2025



THE CANTERBURY CLIMATE PARTNERSHIP PLAN...

- Collective climate actions best advanced on a regional level to maximise implementation efficiency and effectiveness, and value for money.
- Complements local climate strategies and plans developed by individual councils.
- Actions to address the priority risks identified within the Canterbury Climate Change Risk Assessment.
- Development aligned to councils LTP timeframes (\$ through LTPs – dependent on results of deliberations in June).
- Acknowledges the current financial pressures faced by local government and offers a pragmatic financial advantage.

BENEFITS

- Regional leadership & community focus
- A united voice & enhanced influence
- Leveraging collective resources, sharing knowledge & expertise
- Maximising efficiencies
- Fostering innovation
- Building resilience

CANTERBURY
Mayoral Forum

A strong regional economy with resilient, connected communities and a better quality of life, for all.





PROJECT MILESTONES TO DATE



June 2023

Strategic framework agreed by Reference Group with subsequent council endorsements and feedback



November 2023

Stakeholder engagement through Environment Canterbury's "What's Our Future, Canterbury and Let's Pick a Path" initiatives, including climate summits in each district



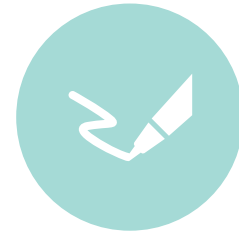
November 2023

CMF endorsed in principle the recommended total investment of \$1.47m over 3 years for collaborative climate actions.



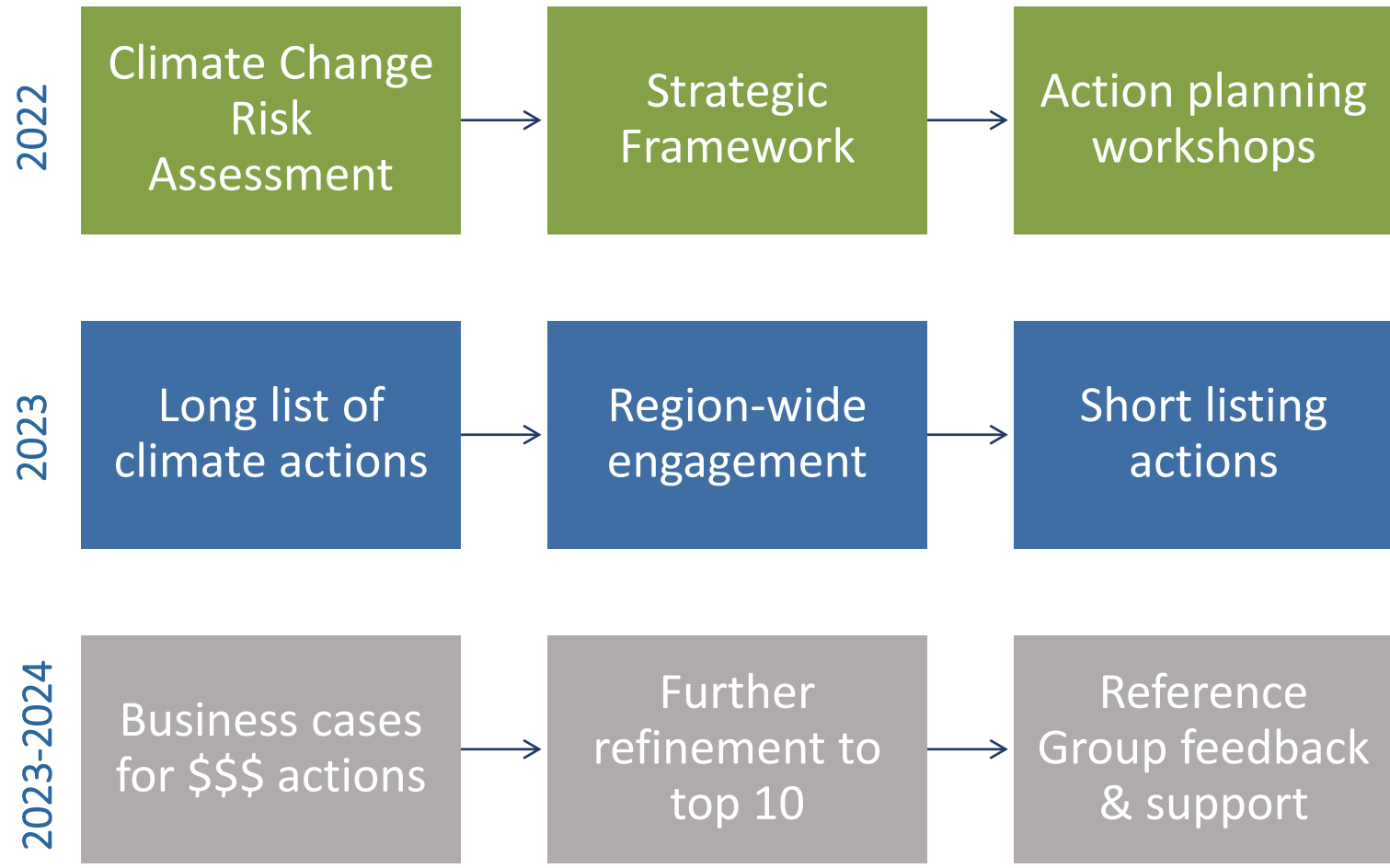
February 2024

Workshop held with Working Group & Reference Group. Actions agreed in principle by Reference Group.



April 2024

Plan being drafted and reviewed by Working Group & Reference Group.



ACTION DEVELOPMENT PROCESS

Canterbury Climate Partnership Plan - Strategic Framework

Canterbury Mayoral Forum project - led by the Climate Change Working Group and Reference Group, December 2023

CANTERBURY
Mayoral Forum

A strong regional economy with resilient, connected communities and a better quality of life, for all.

Vision

Our collective purpose and guiding star for climate action in Canterbury

A thriving, climate resilient, low emissions Canterbury

Principles

The values by which we will approach climate action in Canterbury



Treaty based

Solutions focused



Collaborative

Equitable



Bold

Informed



Intergenerational

Inclusive

Outcomes

The desired future state for Canterbury in a changing climate

A healthy environment

Our healthy environment enables our communities to thrive.

An equitable and inclusive transition

Our communities are empowered through an equitable and inclusive transition to a low emissions and climate resilient future.

Prosperity

Our environmental, cultural, economic, and social wellbeing is improved by identifying and taking early opportunities to mitigate and adapt to climate change.

Adapted and resilient communities

Our communities are resilient and have the necessary infrastructure, knowledge, and tools they need to adapt to climate change.

Emissions reduction

Greenhouse gas emissions reductions are achieved in line with our national and international commitments at a minimum.

Climate action leadership

Canterbury is a leader in climate change mitigation, adaptation and inclusive climate action planning and promotes the four wellbeings.

Strategic Objectives

What we want to achieve through regional joint climate action

OBJECTIVE #1

To work with science, nature and Mātauranga Māori to reduce climate vulnerability and improve resilience.

OBJECTIVE #2

To enable transformational action in an inclusive and equitable way.

OBJECTIVE #3

To maximise co-benefits and identify opportunities for co-funding and financing climate actions.

OBJECTIVE #4

To inform and empower communities to be prepared, improve their resilience and adapt to climate change.

OBJECTIVE #5

To collaborate with communities to use available solutions and encourage behaviour change to achieve a smart, innovative, low emissions future.

OBJECTIVE #6

To ensure climate change is prioritised in all local government decision making processes in Canterbury.

10 PRIMARY ACTIONS IDENTIFIED

1

Understanding Climate Risks and Improving Resilience

Understand **climate hazards and risks** in Canterbury to support evidence-based decision making and improve regional resilience.

2

Emissions Reduction

Work together across the region to **build equitable, inclusive pathways**, targets, and key actions to support New Zealand's commitments towards global **greenhouse gas emissions reduction**.

3

Adaptation Planning

Support best practice approaches for **local adaptation planning** with communities.

4

Nature Based Solutions

Facilitate the development of a **Canterbury blue-green network** to increase natural capital, indigenous biodiversity and offer nature-based solutions to climate change effects.

5

Climate Change Education and Advocacy to support communities

Support **community understanding** about the local impacts of climate change and promote individual and collective climate action.

6

Supporting Papatipu Rūnanga

Support **Papatipu Rūnanga with climate action** and provide continuing opportunity for their involvement with Canterbury Climate Partnership Plan projects to the extent they so wish.

7

Integrating climate change considerations in council processes

Work collaboratively to **build local government capability** and enhance its capacity to adapt in a changing climate.

8

Climate Funding and Financing

Identify and **leverage co-funding and financing** opportunities for climate adaptation and resilience.

9

Monitoring and Evaluation

Monitor and report on progress towards achieving the actions and outcomes of the Partnership Plan.

10

Implementation

Assemble an implementation team to ensure the **successful delivery and implementation** of the Canterbury Climate Partnership Plan.

CCPP CLIMATE ACTIONS/SUBACTIONS

Understanding Climate Risks and Improving Resilience

Understand climate hazards and risks in Canterbury to support evidence-based decision making and improve regional resilience.

- Scope and develop a Canterbury-wide visualisation tool for use by councils to support climate adaptation and resilience planning
- Update the Canterbury climate change risk and urgency assessment to ensure a comprehensive and up to date understanding of key risks and opportunities under different climate change scenarios at a regional and district level.

Emissions Reduction

Work together across the region to build equitable, inclusive pathways, targets, and key actions to support New Zealand's commitments towards global greenhouse gas emissions reduction.

- Collate data and develop models to develop carbon inventories and identify transition pathways for Canterbury to support New Zealand's national greenhouse gas commitments.
- Based on transition pathways identified for Canterbury, undertake a regional transition risk and opportunities assessment, including an economic impact assessment, to inform an equitable and inclusive transition to a low emissions region.
- Work with partners, communities, and key stakeholders to build a regional low emissions transition strategy that supports equitable, inclusive local pathways to a thriving, climate-resilient region meeting emissions reduction targets.

CCPP CLIMATE ACTIONS/SUBACTIONS

Adaptation Planning

Support best practice approaches for local adaptation planning with communities.

- Develop and implement a best practice approach for councils in Canterbury to work effectively and efficiently together with communities on adaptation planning and implementation.

Nature Based Solutions

Facilitate the development of a Canterbury blue-green network to increase natural capital, indigenous biodiversity and offer nature-based solutions to climate change effects.

- Develop a Canterbury-wide ecosystem climate change risk and vulnerability assessment.
- Develop a blue-green network plan for Canterbury and accompanying guidance to support locally-led implementation.

CCPP CLIMATE ACTIONS/SUBACTIONS

Climate Change Education & Advocacy

Support community understanding about the local impacts of climate change and promote individual and collective climate action.

- Continue to develop the “It’s Time, Canterbury” initiative into a comprehensive resource hub for climate education and collective action across Canterbury.
- Collaborate with Civil Defence and Emergency Management in Canterbury to produce communications materials that integrate climate action and resilience to natural hazards.

Supporting Papatipu Rūnanga

Support Papatipu Rūnanga with climate action and provide continuing opportunity for their involvement with Canterbury Climate Partnership Plan projects to the extent they so wish.

- Understand the climate action requirements of Papatipu Rūnanga and support councils to work with Papatipu Rūnanga individually and collectively to implement these actions.
- Work with Papatipu Rūnanga mātauranga Māori experts to understand and integrate indigenous knowledge into local climate action.

CCPP CLIMATE ACTIONS/SUBACTIONS

Integrating Climate Change Considerations into Council Procedures

Work collaboratively to build local government capability and enhance its capacity to adapt in a changing climate.

- Integrate climate change mitigation and adaptation considerations across all council business including decisions, policies, projects, procurement, and infrastructure development.

Climate Funding and Financing

Identify and leverage co-funding and financing opportunities for climate adaptation and resilience.

- Advocate to central government for funding to be made available for the climate-related actions that need to be taken by local government to address the gap between current local government funding and what is needed for the comprehensive climate action that is required in the future.
- Explore the feasibility of a Canterbury Climate Commitment that inspires and unites businesses and communities to accelerate climate action.

CCPP CLIMATE ACTIONS/SUBACTIONS

Monitoring and Evaluation

Monitor and report on progress towards achieving the actions and outcomes of the Partnership Plan.

- Develop and implement a monitoring and evaluation plan which includes the co-development of climate related indicators appropriate to Canterbury.

Implementation

Assemble an implementation team to ensure the successful delivery and implementation of the Canterbury Climate Partnership Plan.

- (Implementation options currently in development)

PROPORTIONAL COLLABORATIVE FUNDING

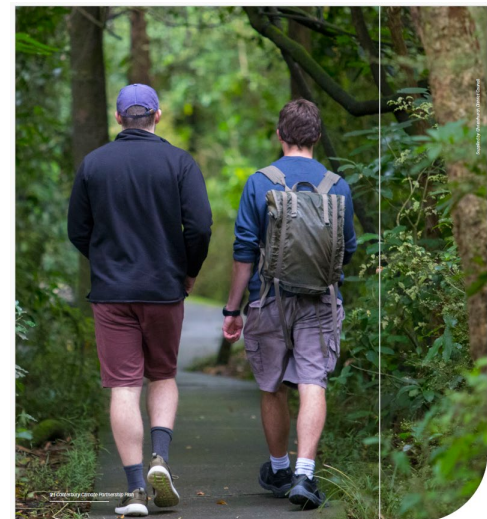
	CMF contribution ratios (%)	Y1 LTP	Y2 LTP	Y3 LTP	Total Y1-Y3 LTP
Environment Canterbury	20.5	38,950	151,700	110,700	301,350
Christchurch	20.5	38,950	151,700	110,700	301,350
Selwyn	10.7	20,330	79,180	57,780	157,290
Waimakariri	10.7	20,330	79,180	57,780	157,290
Ashburton	9.8	18,620	72,520	52,920	144,060
Timaru	9.8	18,620	72,520	52,920	144,060
Hurunui	5.2	9,880	38,480	28,080	76,440
Waimate	3.9	7,410	28,860	21,060	57,330
Waitaki	3.9	7,410	28,860	21,060	57,330
Kaikōura	2.5	4,750	18,500	13,500	36,750
Mackenzie	2.5	4,750	18,500	13,500	36,750
TOTAL estimated costs for collective action	100	190,000	740,000	540,000	1,470,000

CCPP DESIGN

What matters most - Climate change in Canterbury

During the development of the Canterbury Climate Change Risk Assessment, a **Reference Project Steering Group** was formed to help develop an integrated risk assessment framework, specific to our region.

The risk assessment primarily assessed a scenario that aligns with the 1.5°C scenario outlined in the national Climate Change Adaptation Framework. The scope of the Reference Project was to 'test' the risks, the nature of the hazard, its time horizon, the likelihood of the hazard, its frequency, the extent of the hazard in terms of geographic area, and any potential for secondary or cascading impacts that could compound the hazard. We also explored the potential for adaptation and resilience measures. The framework we developed is a series of choices, reflecting the complex nature of the world's weather systems, in order to be more prepared for the future which does not exist on the whāngaiti alone.

It's time, Canterbury - Let's act now for a liveable prosperous future

Foreword from the Chair of the Canterbury Climate Action Planning Reference Group - Dan Gordon and Chair of Mayoral Forum - Nigel Rosen

Climate change is one of the most pressing challenges of our time, and it affects us all. To tackle climate change and its impacts effectively, we have to work together. By joining forces and taking bold, collective climate action here in Canterbury, we stand a much better chance of benefiting our communities and can even transform risks into opportunities.

All 11 councils in Canterbury have worked together to develop this plan - the Canterbury Climate Partnership Plan - which sets out how we intend to work together and with others to support our transition to a strong, resilient, and liveable region. Every year in Canterbury is already involved with climate action in their city, district or region, and the Canterbury Climate Partnership Plan doesn't detract from that work. Instead, this plan joins the dots, building on what our work programmes, underpinned, and providing regional solutions to shared problems.

In developing this plan, we sought to get the best 'bang for buck' for Canterbury residents while accelerating the scale and pace of climate action for current and future generations. The 10 climate actions in this plan are the first steps in our journey towards a sustainable future. It's time to work together, Canterbury.



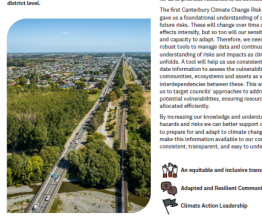
Nigel Rosen, Chair, Canterbury Mayoral Forum
Dan Gordon, Chair, Canterbury Climate Action Planning Reference Group

Action 1: Understanding climate risks and improving resilience

Understand climate hazards and risks in Canterbury to support evidence-based decision making and improve regional resilience.

Action 1.1
Scope and design of Canterbury-wide consultation tool for use by councils to support climate adaptation and resilience planning.

Action 1.2
Update the Canterbury climate change risk and urgency assessment to ensure a comprehensive and up-to-date understanding of key risks and opportunities under different climate change scenarios at a regional and district level.



Why we're taking this action

Councils have a statutory responsibility to protect or mitigate natural hazards and to have regard to the effects of climate change when making decisions. They are also responsible for city defence and emergency management, as well as improving community resilience.

The action is about furthering our understanding of climate risks in the region so that we can better understand. We need to know who and what is at risk, and where, for us to prioritise resources to do something about it.

The first Canterbury Climate Change Risk Assessment gave us a foundational understanding of current and future risks. There will be changes over time as climate action unfolds, but we can use our knowledge to identify and respond to risks. Therefore, we need reliable and robust tools to manage data and continually improve our understanding of risks and impacts as climate change unfolds. A first-of-its-kind tool can centralise and synthesize information to assess the vulnerabilities of different communities, ecosystems and assets as well as the interdependencies between them. This will enable us to target our efforts to addressing the most potential vulnerabilities, ensuring resources are allocated efficiently.

By increasing our knowledge and understanding of climate hazards and risks we can better support communities to prepare for and adapt to climate change. We want to make this information available to our communities in a consistent, transparent, and easy to understand way.

An equitable and inclusive transition
Adapted and Resilient Communities
Climate Action Leadership

Living well

Action 2: Emissions reduction

Work together across the region to build equitable, inclusive pathways, targets, and key actions to support New Zealand's commitments towards global greenhouse gas emissions reduction.

Action 2.1
Collate data and develop models to prepare carbon inventories and identify transition pathways for Canterbury to support New Zealand's national greenhouse gas commitments.

Action 2.2
Based on the transition pathways identified for Canterbury, undertake a regional transition risk and opportunities assessment, including an economic impact assessment, to inform a equitable and inclusive transition to a low-emission region.

Action 2.3
Work with partners, communities, and key stakeholders to build a regional low-emissions transition strategy that supports equitable, inclusive local pathways to a thriving, climate-resilient region meeting emissions reduction targets.



Why we're taking this action

As a global leader, the more we reduce our emissions, the better our ability to adapt to the impacts of climate change. Put simply, if we do not cut our greenhouse gas emissions, we will live with fewer choices on how to adapt and meet to future challenges.

Canterbury has an important role to play in supporting international and national commitments to reduce greenhouse gas emissions and transition to a low-emissions future. We have a unique emissions profile in our region. Our approach is to focus and share particular high-emitting sectors, instead we aim to work with partners and key stakeholders to make robust, evidence-informed decisions about how all sectors can reduce their greenhouse gas emissions in a sustainable and timely way. Our aim is to make it possible for everyone to play their part in our collective climate action endeavours.

By working with others, understanding the risks and opportunities that transition to a low-emissions future presents, we can be strategic about mitigating those risks and leveraging opportunities early to provide for a planned and equitable approach to regional greenhouse gas emissions reduction.

A comprehensive transition strategy will lay out a road map individual councils can use to work with residents to most effectively reduce emissions at a local level.

An equitable and inclusive transition
Prosperity
Resilience reduction
Climate Action Leadership

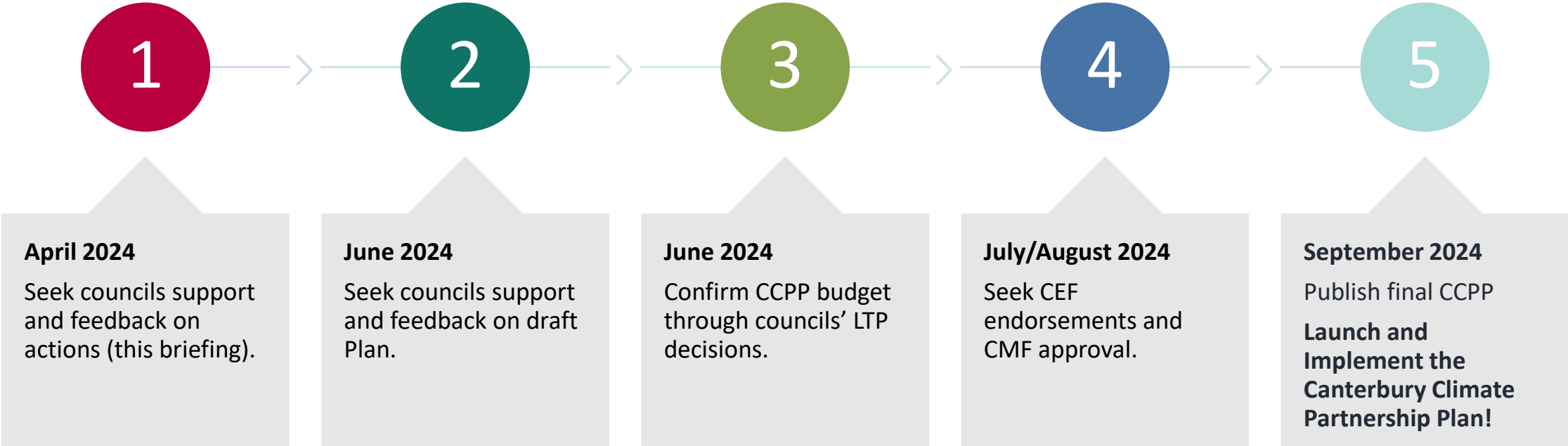
Living well

It's time, Canterbury
Our climate change conversation





FINALISING THE CCPP - 2024



RECOMMENDATIONS

For Council to:

- note the information provided on the CCPP
- provide feedback on CCPP actions
- support CCPP actions.