



WAKATU QUAY DEVELOPMENT ROADING UPDATE

October 2024

Background

In 2020 the Kaikōura District Council (KDC) was granted \$10.18 million from the national Provincial Growth Fund (PGF), now known as Kānoa, to fund the Kaikōura Marine Development Programme (KMDP). The grant funding is for the development of a key Kaikōura location at Wakatu Quay.

The Wakatu Quay development opportunity originated as an outcome of the community led “Reimagine Kaikōura” work in 2018 where a number of activities were identified to stimulate economic growth and capability in the district post the 2016 earthquake.

The development of Wakatu Quay will contribute to delivering the agreed objectives for the Kaikōura District including:

- Enhancing economic development opportunities
- Creating sustainable jobs
- Boosting social inclusion and participation
- Building resilient communities.

Construction to Commence

Construction will comprise two parts, Part A will see the development of the area once occupied by old commercial fishing buildings that suffered damage in the 2016 earthquake. This stage (areas 1 & 2 in the diagram) will include the preparation of the site, replacing civil infrastructure including power, lighting, water, sewage and communications, ready for future development and construction of the hospitality building.

Part B (area 3) includes the road network surrounding the development that will be upgraded including parts of Lower Ward Street and Avoca Street increasing the volume of available parking in the area.

Local construction company LMC Building and Construction have been appointed as Lead Contractor for part A and will commence site works in October 2024. Construction will occur in stages over the next 12 months. Part B will be offered to tender to the market in October with upgrades planned to be undertaken in February/March 2025.

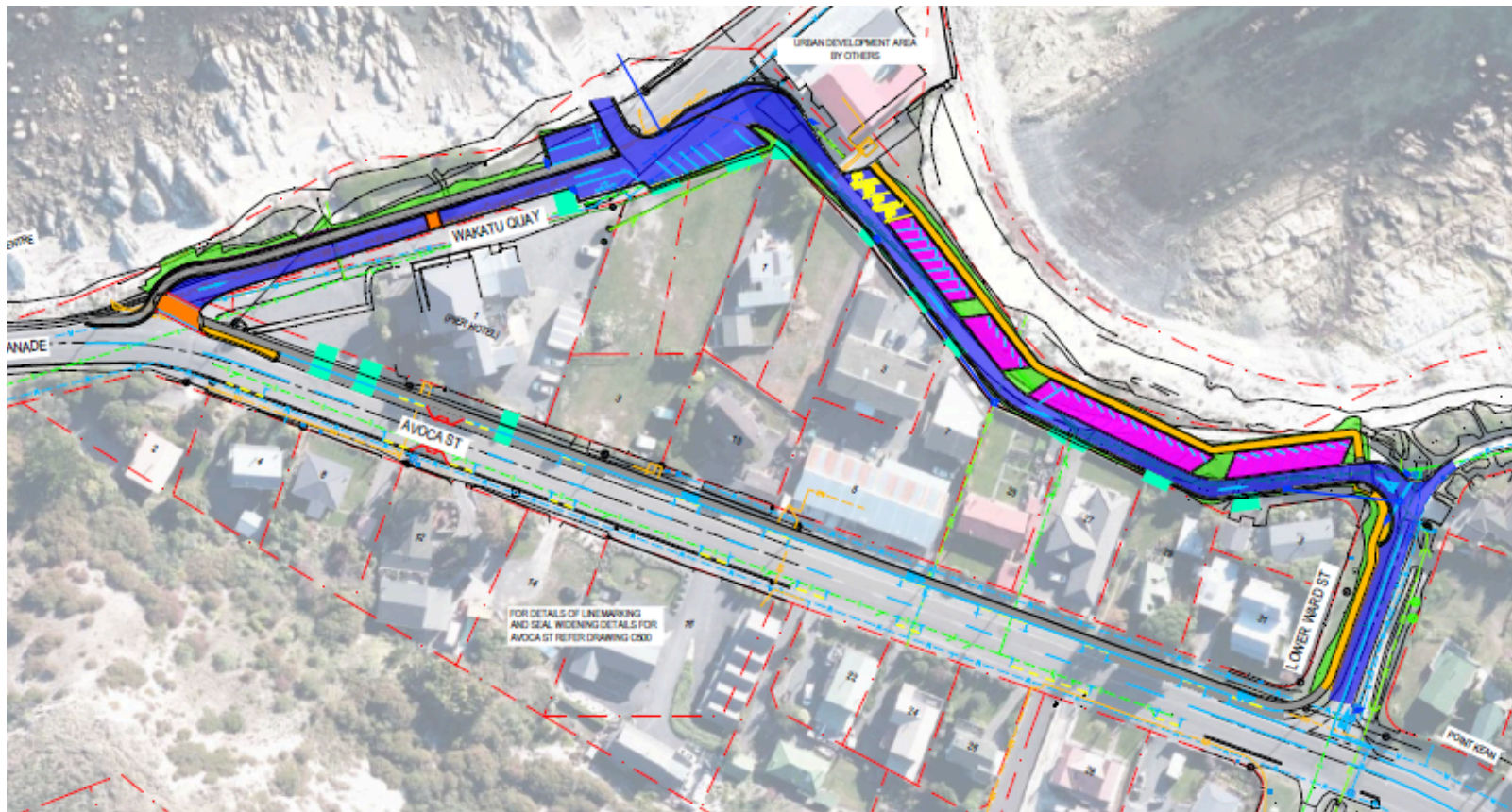


Completion of Roading Design

As noted previously the project is upgrading the surrounding roading network to meet the needs of the development and to meet the conditions of the resource consent. The KMDP Project team has been working with the roading designers in the production of detailed drawings for the road changes.

Roading changes include upgrading the current road around the Wakatu Quay area along with provision of parking and the application of permanent speed restrictions.

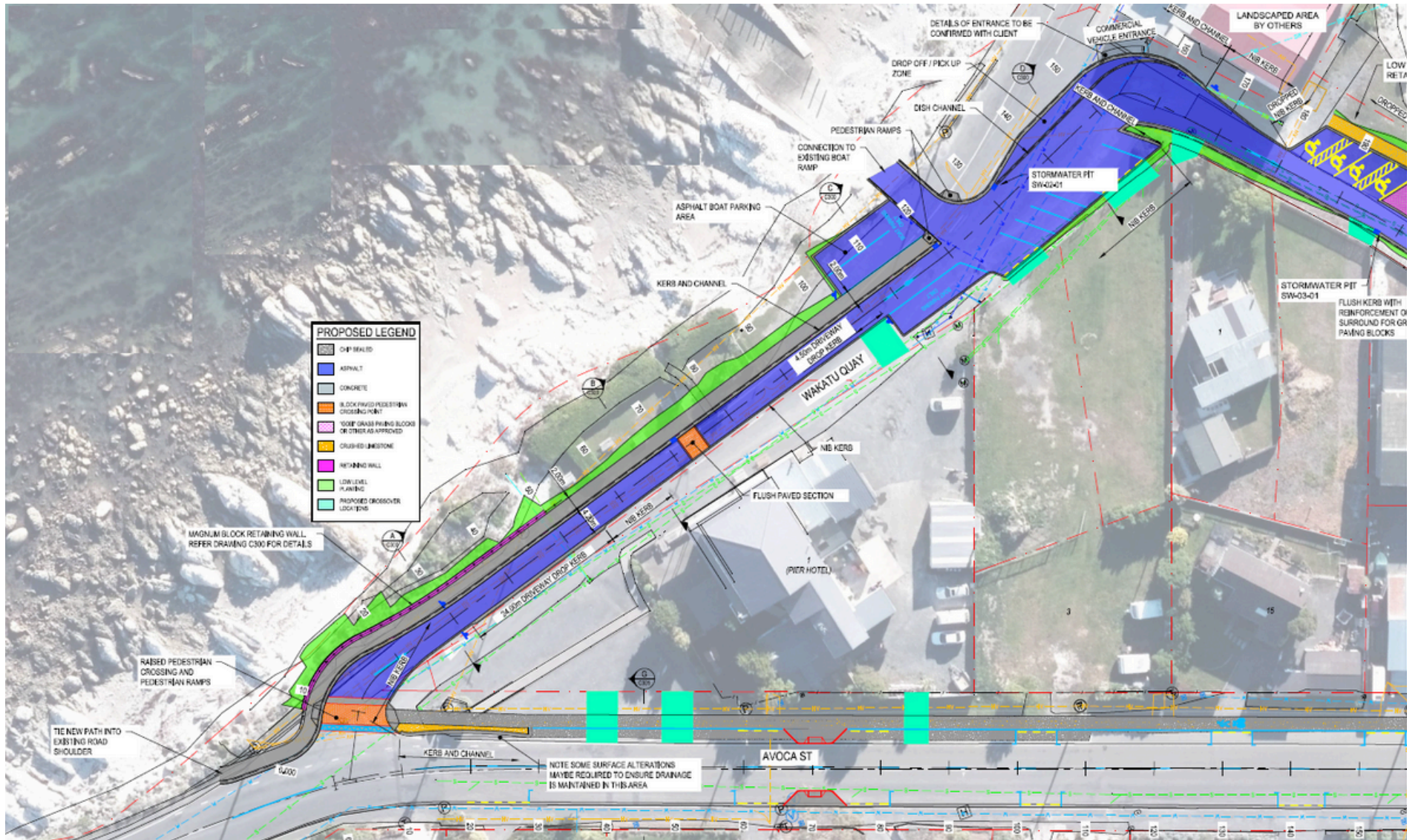
Implementation of the roading design will be managed by the council operations team for tender and construction. The work forms part of the KDC 2025 roading deliverables, funded via the Wakatu Quay project.



Roading works includes a walkway along the ocean side of Wakatu Quay road, improved safety notices and provision for marked parking and footpath along Avoca street.

Roading Design

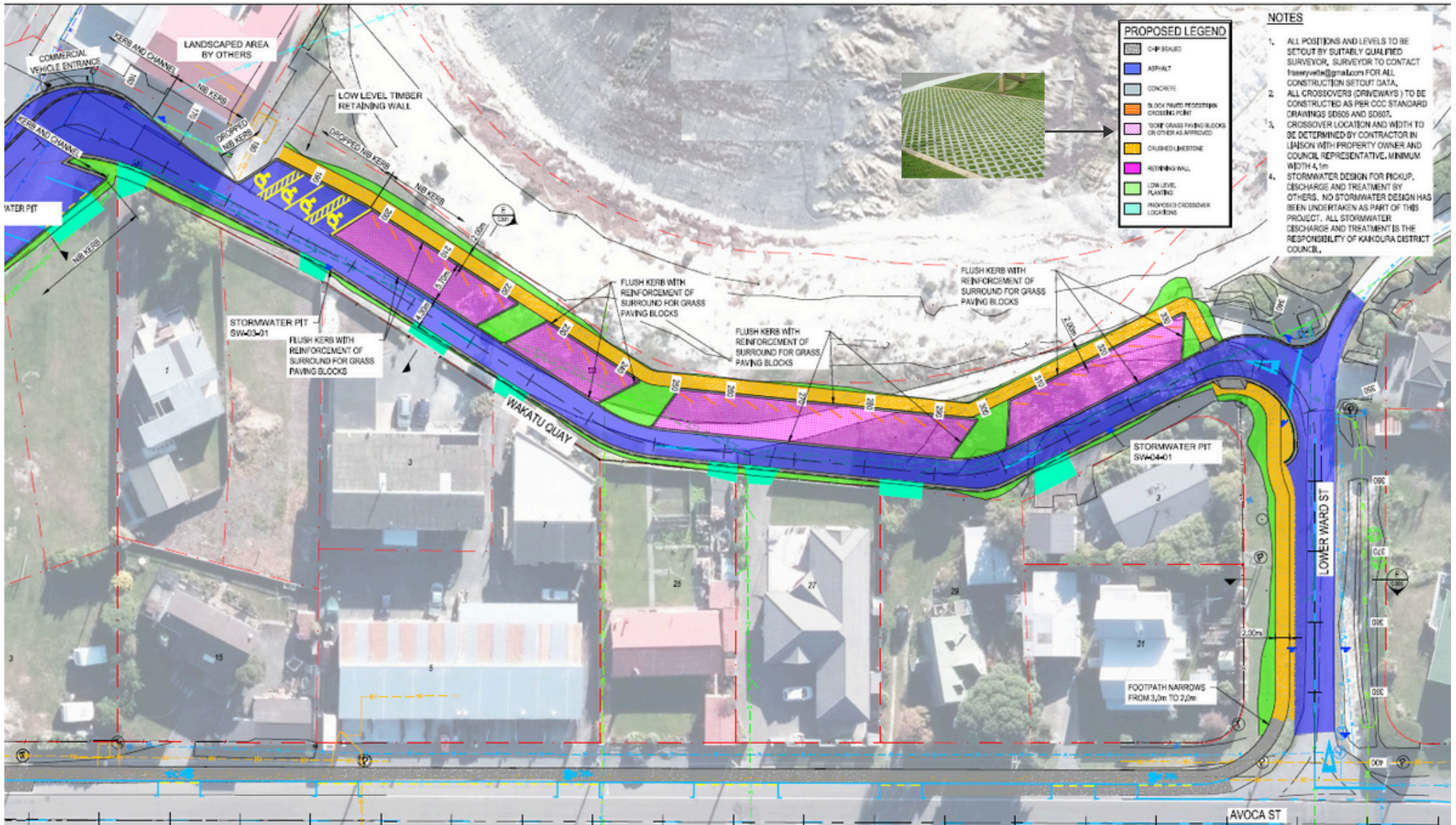
Works in the area will focus on creating an attractive visitor precinct with footpaths and cycling focus as well as renewing the ageing road.



Parks for recreational boats are included as well as marked out parking spaces to improve traffic flow around the area.

Roading Design Cont

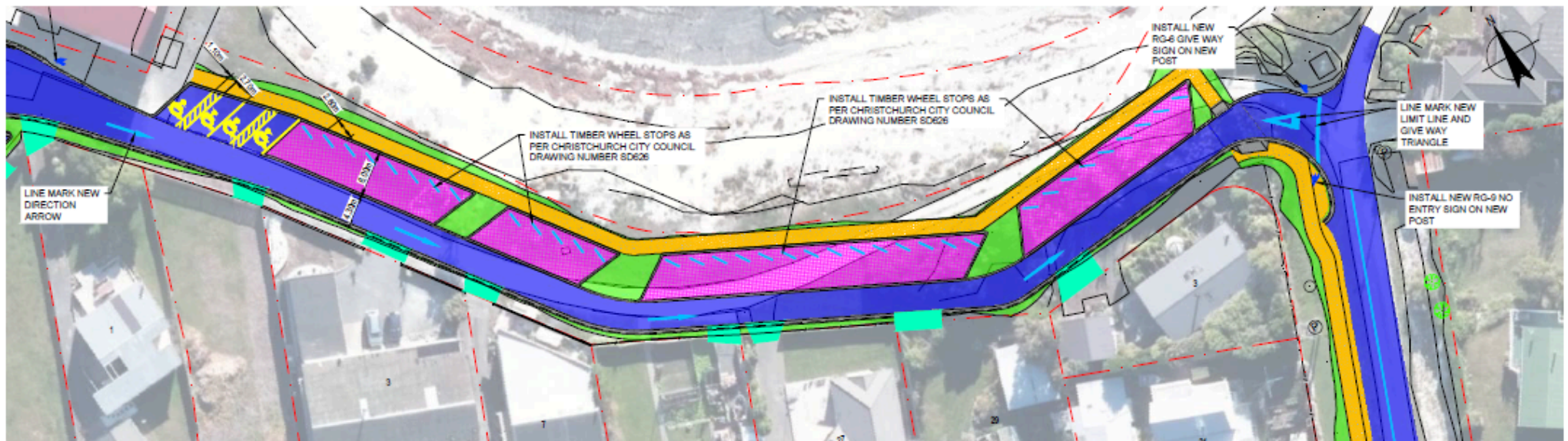
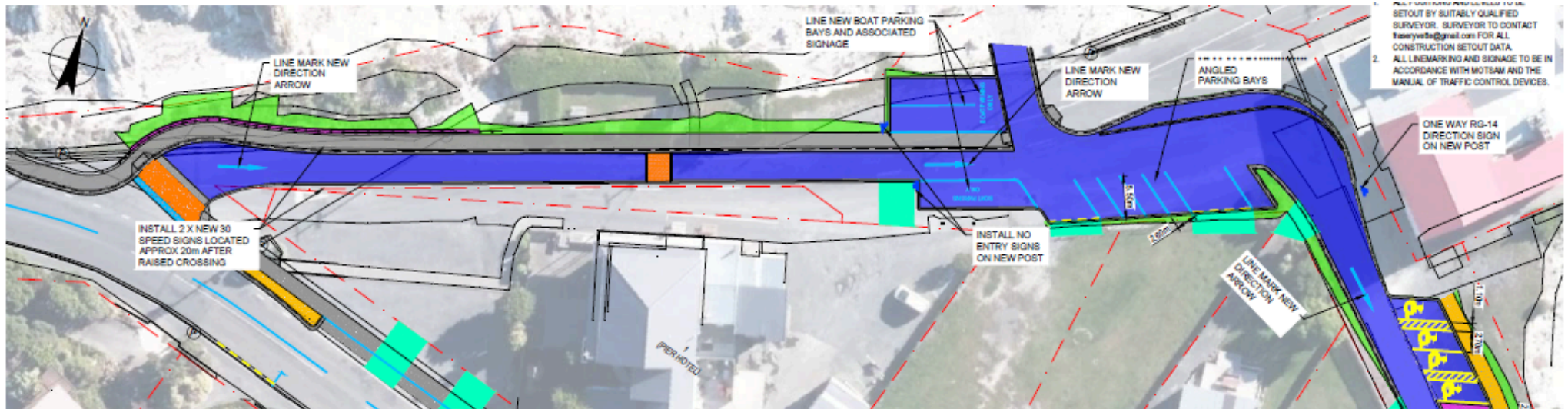
Parking will be developed along the existing road corridor on the Wakatu Quay road reserve. Parks will be constructed with "Gobi" blocks, a heavy-duty paver for high-traction areas, retaining a semi-grassed look over time. A limestone footpath will be included along the "top" north-east side before it transitions into the area leading to the beach.



A chip seal footpath will be installed along the north side of Avoca Street along with marked parking zones.

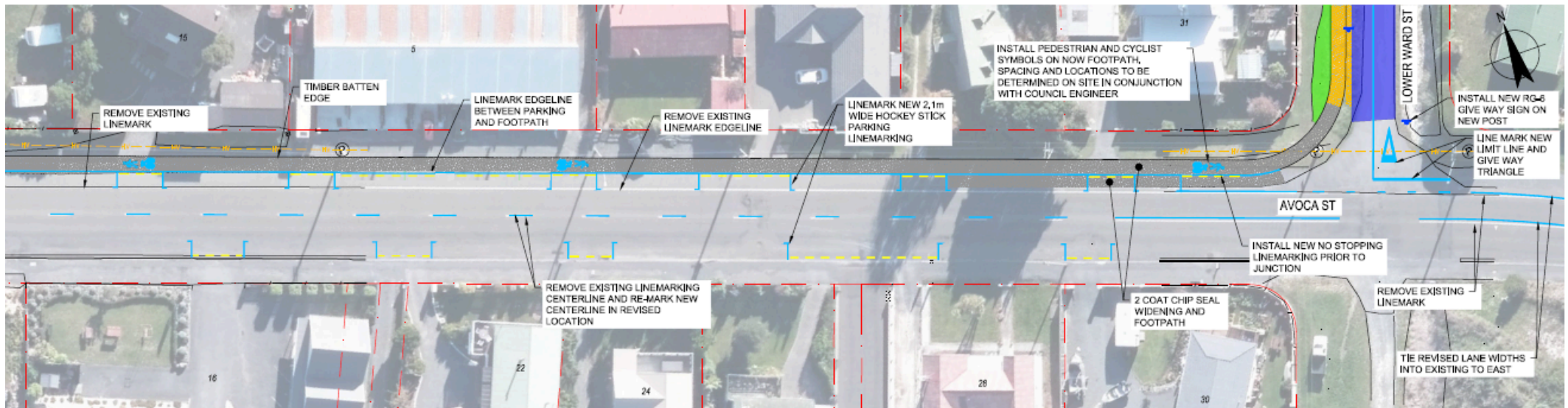
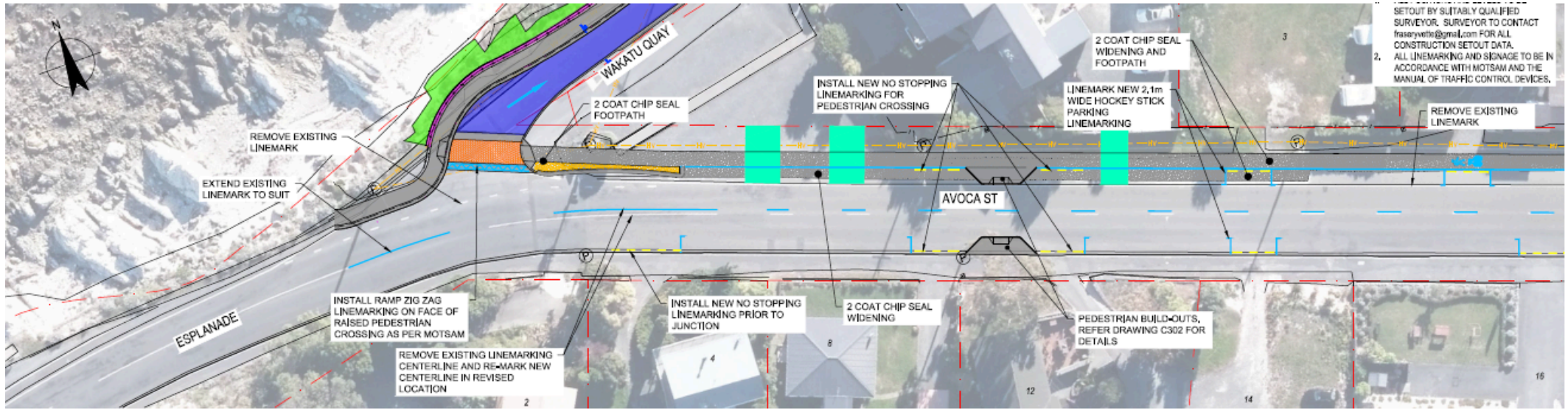
Roading Design Cont.

Detail of changes along the esplanade and Wakatu Quay Road



Roading Design Cont.

Detail of changes on Avoca Street

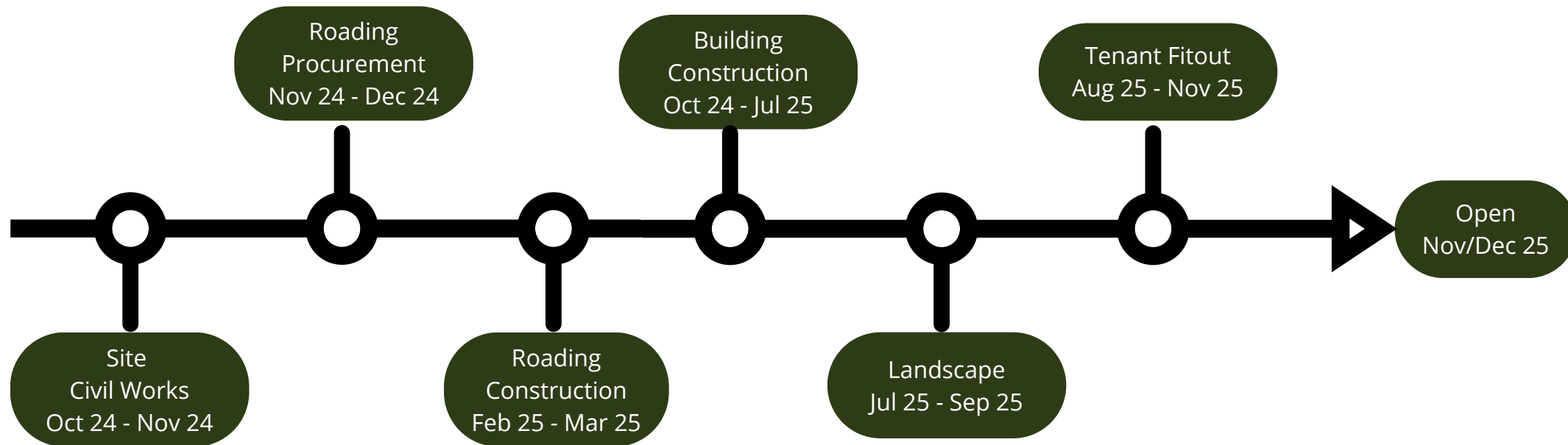


Public Access to Wharf to close for Construction

For practical construction and health and safety reasons access to the wharf will be restricted to **commercial activity only**. Public access to the wharf will not be permitted until advised otherwise.

Public access to the wharf will be reinstated over the Christmas break from mid December until mid January, actual dates will be advised closer to the time and posted on the council website. The wharf area is then planned to be closed again from January till completion.

Implementation Timetable



Where to find more information

Further information on the project is available on the [Kaikōura District Council Website](#)

The Wakatu Quay development is funded by the Provincial Growth Fund, managed by Kānoa – Regional Economic Development & Investment Unit. The funding will enhance economic development opportunities, create sustainable jobs and boost social inclusion and participation.