



## Upcoming works - Hawthorne Road

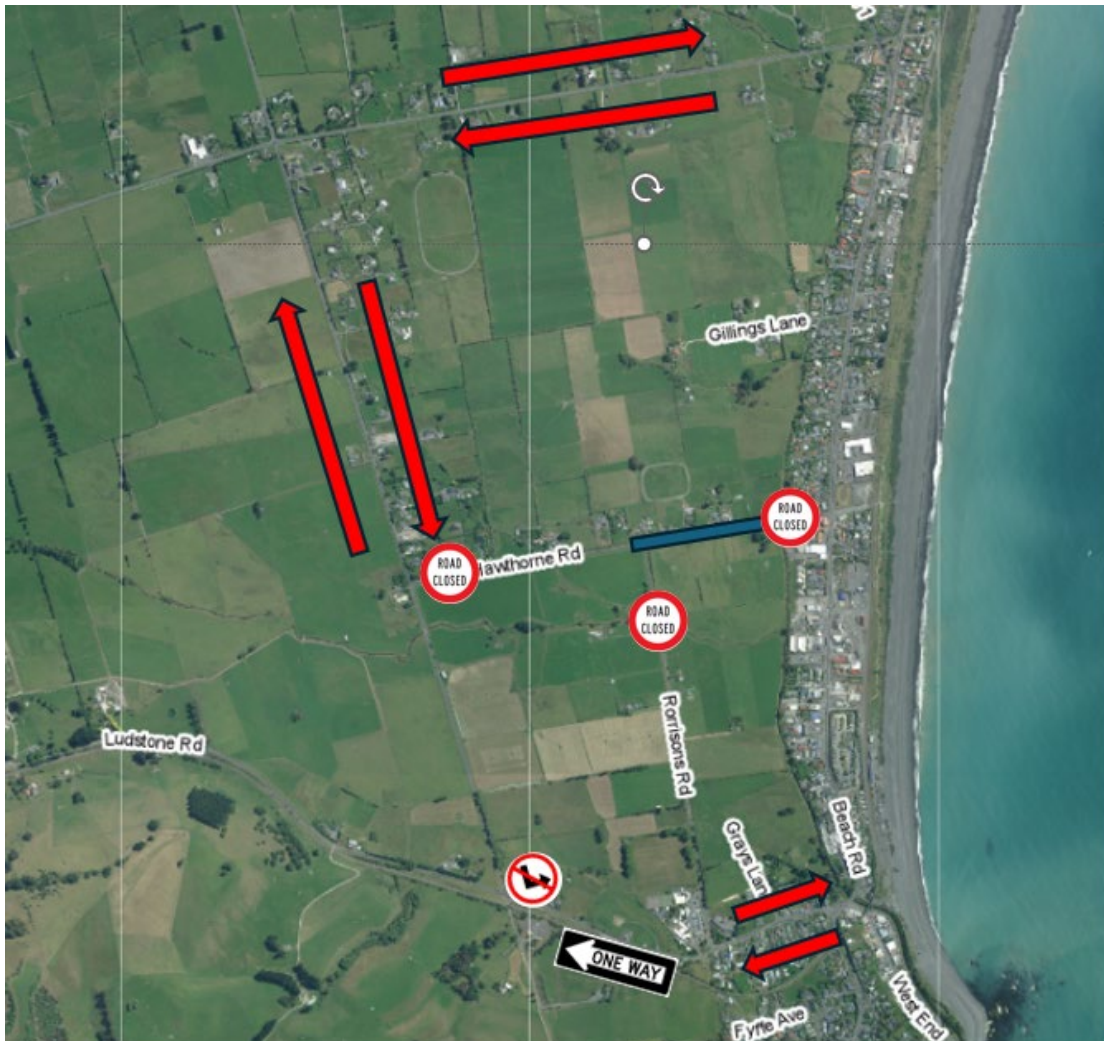
We are starting the pavement renewal works on Hawthorne Road on Wednesday the 15<sup>th</sup> of May. These works involve the granular overlay and chipsealing of the road as part of KDC's renewal programme.

The works are split into two stages as seen below.

### Stage 1



## Stage 2



### Where will this happen?

Stage one will be from Rorrison's Road turn off to approximately 200m West along Hawthorne Road. Then stage two will be from Rorrison's Road to the bridge by State Highway one.

### How will this affect you?

During stage one Hawthorne Road will be shut from Rorrison's to Mt Fyffe Road but vehicles will still be able to access SH01 from Hawthorne Road. This stage is expected to take 2 weeks and will finish Friday the 24<sup>th</sup> of May weather dependent.

During stage two Rorrison's Road will be shut along with Hawthorne to non-residents. This is expected to take 2 weeks.



## Some potential Questions and Answers

**Question:** Why are the works started at the same time as other works on Ludstone Road?

**Answer:** KDC acknowledges that there will be travel delays and inconveniences with the planned works as they overlap with the current trenching works on Ludstone Road. Due to unknowns in the future government funding programme and nearing the end of the sealing season, we have decided to push on and target one of the worse sealed roads in the district before the end of the financial year so we can ensure that the works get completed.

**Question:** Is it not possible to keep the road open during construction?

**Answer:** In order to complete the works as efficiently and quickly as possible KDC has decided to complete the works under a road closure. This allows our contractors to be able to complete the works much faster and provide better value for money.

**Question:** What about access to schools?

**Answer:** Residents will have access to schools in the vicinity from SH1 – Hawthorne/Rorrison Road during the Stage one works. By the time we need to close SH1 access to Hawthorne Road for Stage two, we should have Ludstone Road open for 2 lanes. However, if for any reason we cannot complete the Ludstone shoulder seal on time we may need to consider a backup plan. This being that vehicles need to take the long route through Mill Road. However, there will be always access maintained to the schools.